

# iTEAM Project

Bruno Santos  
UrbanSim User Conference



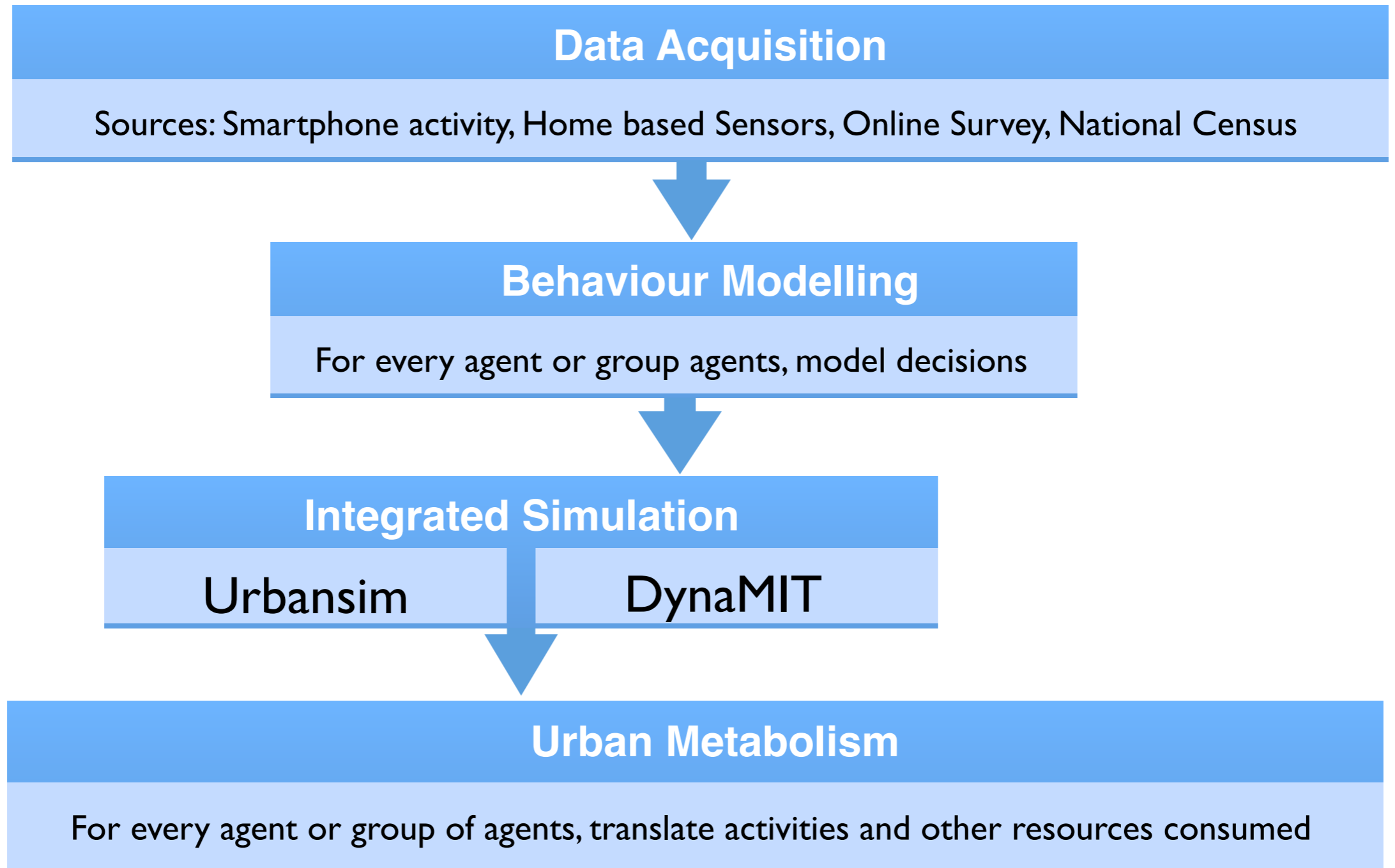
FCTUC

**MIT** Portugal

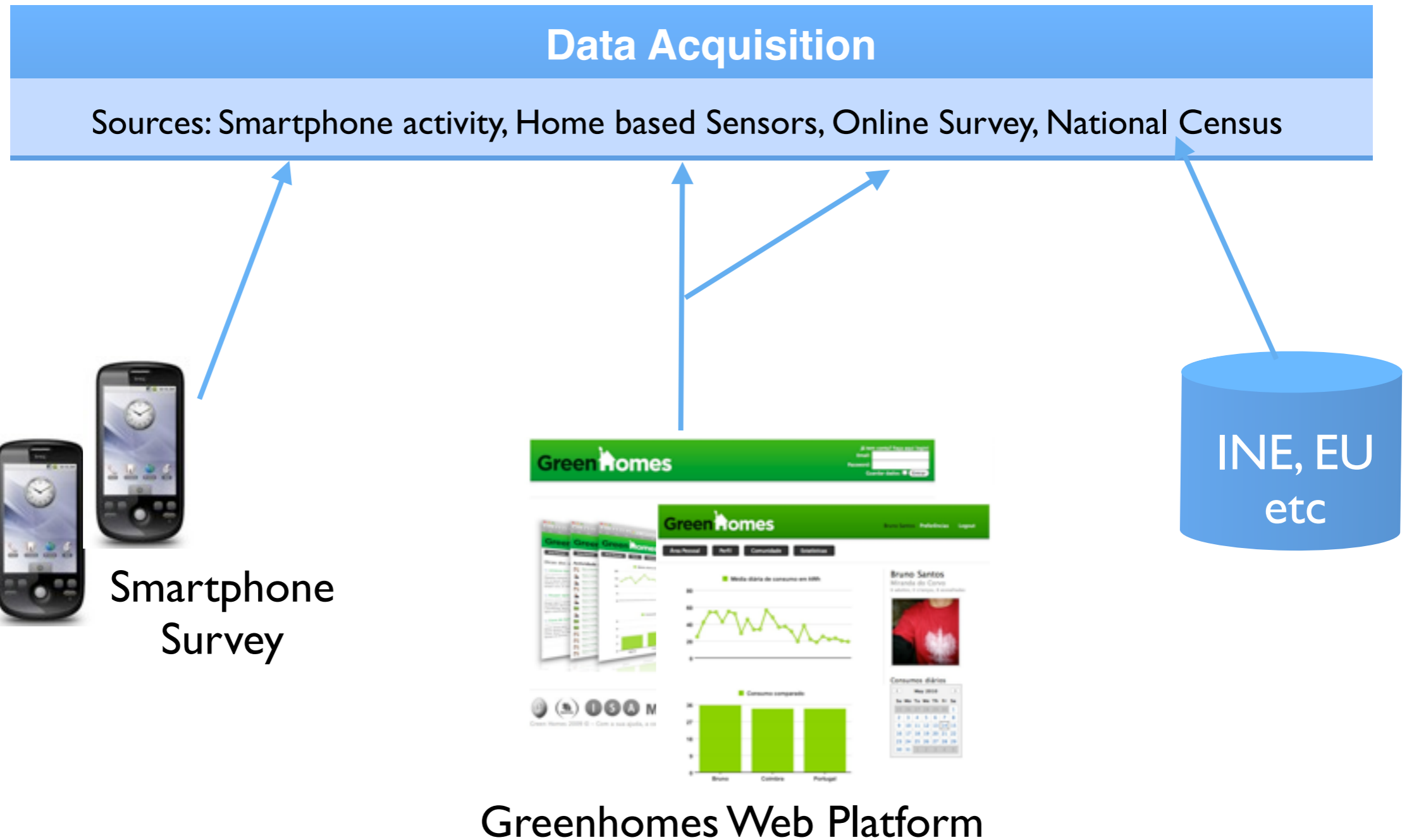
# What is iTEAM about?

- iTEAM = integrated Transportation and Energy Activity-based Model
- Development of behavioural models that take into account mobility, land-use, energy and material consumption
- The goal is to test a range of “green policies” in a simulation platform

# Approach



# Data Acquisition



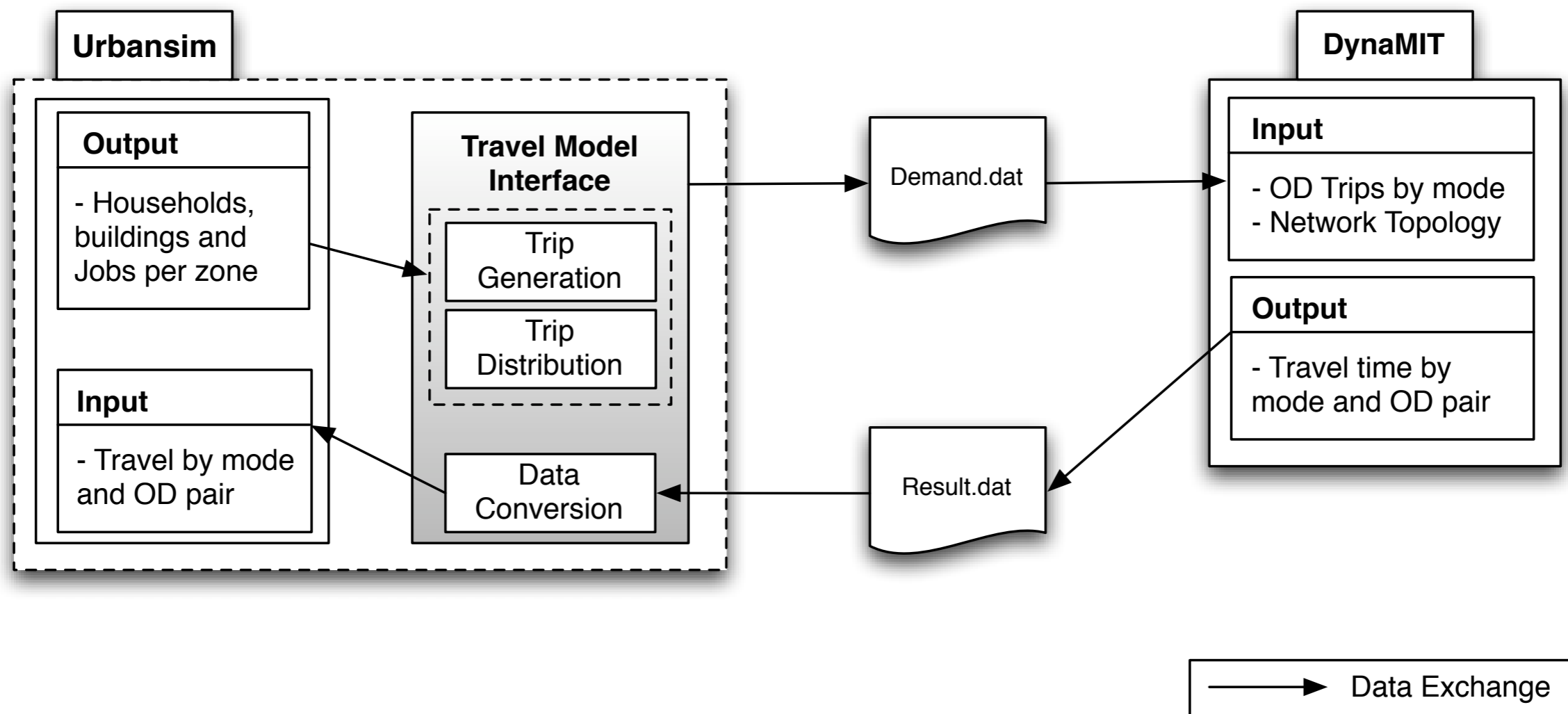
# Integrated Simulation

- Urbansim as point of convergence of previous efforts
- Application of developed sub-models.
- Urbansim extensions: Integration with DynaMIT

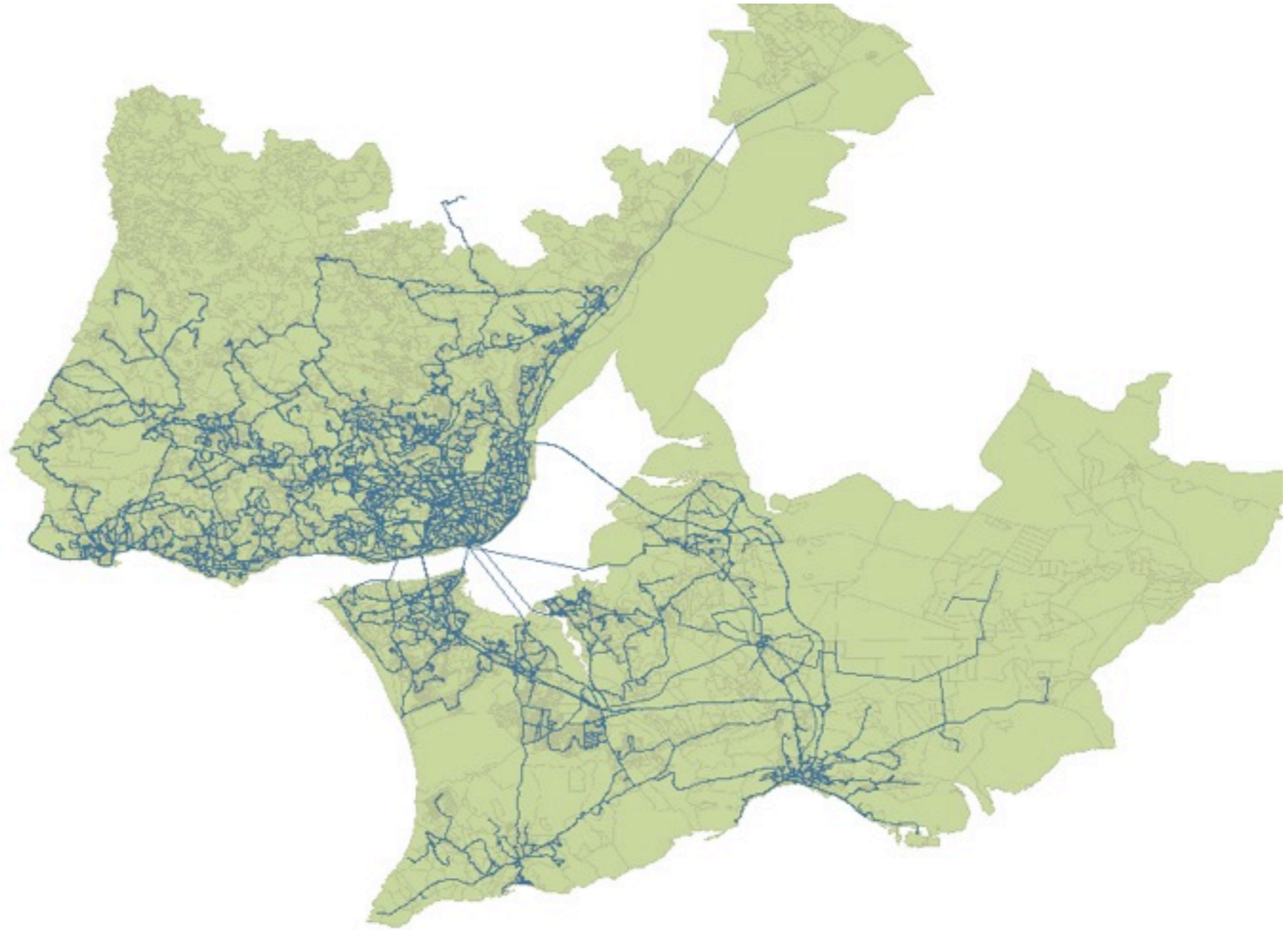
# Urbansim and DynaMIT

- Need of accurate private travel model

# Urbansim and DynaMIT

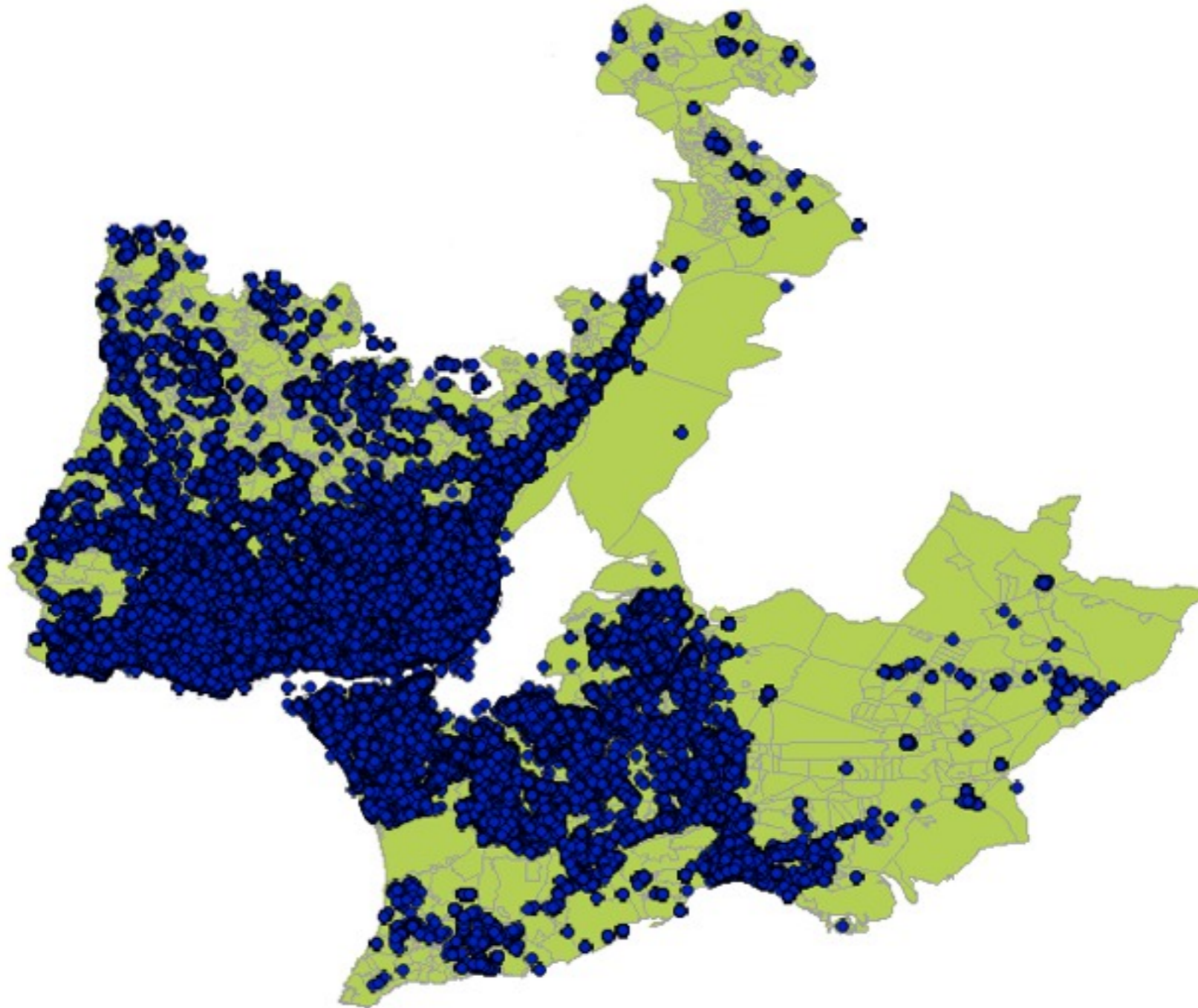


# Lisbon Public Transport





# Lisbon POIs



# Household Location Choice Sub-Model

- Improved accessibility measure using private travel times, public transports and POI clustering.

# iTEAM Project

Bruno Santos  
UrbanSim User Conference



FCTUC

**MIT** Portugal