

SustainCity Consortium Meeting

ENS Cachan, 16-17 February 2012

Place of the meeting: Pavillon des Jardins, École Normale Supérieure de Cachan
61, avenue du Président Wilson
94235 Cachan

Plan of the campus:

<http://www.ens-cachan.fr/version-francaise/outils/plan-d-acces/plan-du-campus-18431.kjsp>

Public transport to ENS: **RER B, Bagneux station** (in the **direction to Robinson or Saint-Rémy, Iès-Chevreuse**). Walking time to ENS Cachan: 10 min.



Once getting out of the **RER B** station, take left, and left again. You will see the supermarket Franprix. Keep on going straight down the road. Follow the ENS Cachan signs.





Arriving in Paris

All the possible means of transport in Paris

When you arrive to Paris, ask for the free Metro Map at the metro station:

<http://bestparistravelguide.com/wp-content/uploads/2011/07/paris-metro-map.gif>

The map and the website of the public transport in Paris: <http://www.ratp.fr/> (also in English language version) will facilitate your travels in Paris. You can use the following means of transport: Métro, Bus, RER, Tramway and Noctilien (communication at night): http://www.ratp.fr/fr/ratp/c_20559/plans-des-lignes/

The price of the ticket in Paris depends on the Paris Zone. However, you can buy the “unlimited” tickets for 1, 2, 3, 5 days.

Ticket à l'unité / Single trip

Paris centre

Toutes lignes de Métro-Tramway-Bus, sauf RoissyBus et OrlyBus - RER dans Paris uniquement / All lines of Metro-Tram-Bus except RoissyBus and Orlybus-RER in Paris only

1 ticket — 1,70€

10 tickets — 12,70€
Enfant (-10 ans) / Children 10 years old — 6,35€

| Paris Centre | | Paris + suburb + airports | |
|----------------|----------------|---------------------------|----------------|
| DAYS / jours | adult / adulte | DAYS / jours | adult / adulte |
| 1 day / jour | 9,75€ | 1 day / jour | 20,50€ |
| 2 days / jours | 15,85€ | 2 days / jours | 31,15€ |
| 3 days / jours | 21,60€ | 3 days / jours | 43,65€ |
| 5 days / jours | 31,15€ | 5 days / jours | 53,40€ |

More information:

http://www.ratp.fr/fr/upload/docs/application/pdf/2011-07/paris_public_transport.pdf

Time schedule is also available on-line. You can check the exact time needed to get from any station in Paris to another (use the names from the Metro Map): <http://www.ratp.fr/> as we are showing in the next three pictures. You will obtain the approximate time, where to change the metro/RER/bus, whether you have to walk and the map of your trip. Please notice, that RER has different destinations and does not stop at all the stations. Make sure that you take the RER B in the **direction to Robinson or Saint-Rémy, Îès-Chevreuse** and it stops at **Bagneux station**.

ratp.fr - Accueil - Internet Explorer, optimized for Bing and MSN

http://www.ratp.fr/

La RATP vous propose des visites guidées de ses sites

Services voyageurs

- Trafic
- Horaires
- Plan des lignes
- Plan interactif

Accès direct

- Journalistes
- Fournisseurs
- Entreprises
- RATP Dev
- Fondation

Rechercher un itinéraire ou un plan de quartier

Départ / Plan de quartier *

Arrivée

Rechercher

* Remplir un champ pour un plan de quartier et deux champs pour une recherche d'itinéraire.

Service de recherche d'itinéraire en Ile-de-France
Informations fournies par les transporteurs et consolidées par le STIF

Fil d'actualités

14 janvier 2012

Découvrez 8 lieux pour bruncher près de votre ligne grâce à J'aime ma ligne

Pour ce week-end, J'aime ma ligne vous propose une sélection de Brunch insolites et originaux à découvrir autour de votre ligne...

[Tout le fil d'actualités](#)

© RATP - Tous droits réservés Contacts - Mentions légales - Nos FAQ - Tous les sites - Plan du site

Start

ratp.fr - Accueil - Int... arriving_in_Paris_Sus...

RATP, transports à Paris et en Ile-de-France : bus, métro, tramway, RER - Internet Explorer, optimized for Bing and MSN

http://www.ratp.fr/itineraires/fr/ratp/resultat-decallefstart?Gare+Du+Nord+%28SNCF%29%2C+Paris/end/Bagneux+%28RER%29%2C+Cachan(fr_date_start%2F1)

Départ

Arrivée

Heure: Départ à 22h 05

Date: 14/01/2012

Mode: Tous
 Ferré (Métro, RER, SNCF, Tramway)
 Bus, Tramway

Critères: Le plus rapide
 Le moins de correspondance
 Le moins de marche à pied

Recommencer **Rechercher**

Le plus rapide : 27 min

Départ : 22h12 Durée totale : 27 min Zones : 1-3 Arrivée : 22h39

Informations de trafic

À partir du samedi 7 janvier 2012, le samedi, le dimanche sauf les jours fériés en raison de travaux, le trafic est perturbé sur la ligne B du RER jusqu'au dimanche 22 janvier 2012. (la circulation des trains est allégée entre Aulnay-sous-Bois et Mitry-Claye. Les gares de Sevran-Livry, Vert Galant, Villeparisis et Mitry-Claye sont desservies par un train toutes les 30 minutes.)

[Afficher le détail de la feuille de route](#)

nabbu votre librairie conseil
www.nabbu.com

LIVRES DE LA SEMAINE
Dans le terrier du lapin blanc
J.P. Villalobos
Parabole ironique sur le monde des narcotrafiquants, un premier roman noir
[lire la suite...](#)

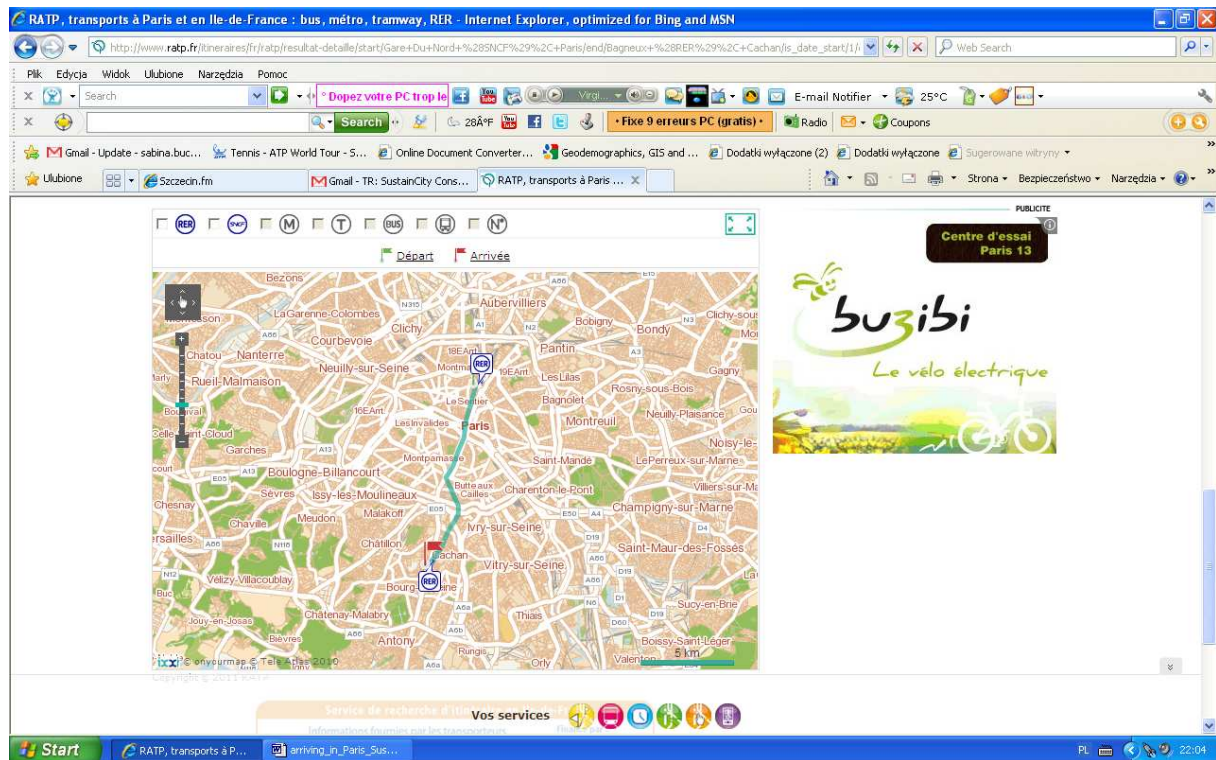
NOUVEAUTÉS eBooks
Le codex Maya
Adrian d'Hagé
Décembre 2012, le compte à rebours a commencé
[lire la suite...](#)

EN CE MOMENT SUR NABBU
Faut-il avoir peur de la Chine ?

Privilège

Pour votre anniversaire, la RATP vous offre une journée féerique à Disneyland Paris...

Vos services



How to get into the center of Paris (and Bagneux station) from all the airports

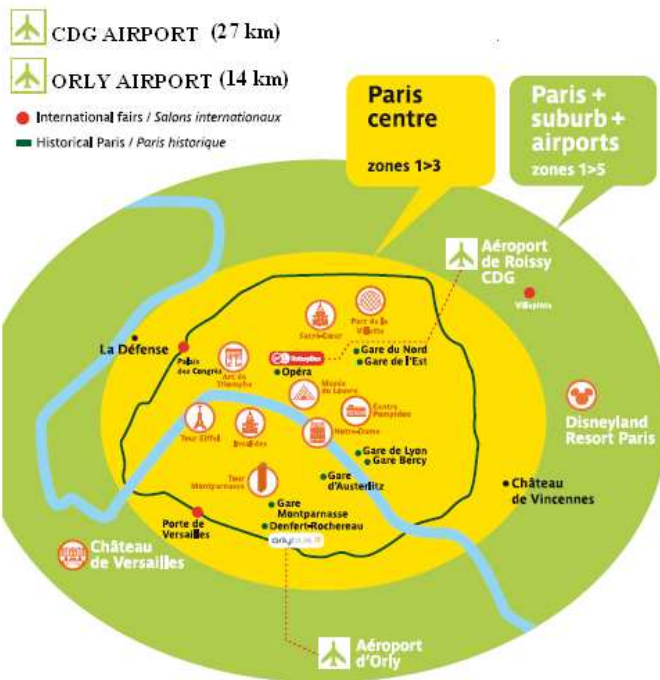
You can take a direct flight to Paris from most of the countries in the world. There are three airports in Paris and around Paris where you can land:

- 1) *ORLY AIRPORT (ORY)*
- 2) *CHARLES DE GAULLE AIRPORT (CDG)*
- 3) *BEAUVAIS AIRPORT*

Information about the airports and the hints how to get from any airport to the center of Paris can be found in this file and on the following websites:

http://www.ratp.fr/fr/ratp/c_20568/acces-aeroports/

http://www.ratp.fr/fr/ratp/c_23613/plans-rer/



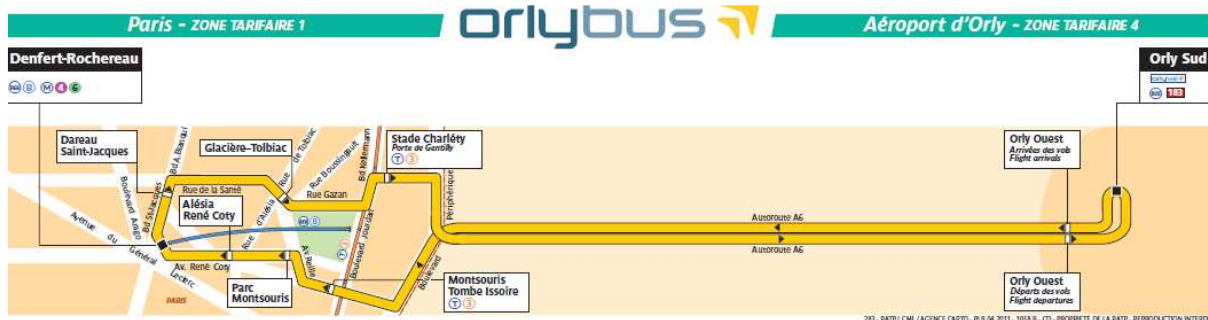
1) ORLY AIRPORT (ORY)

Orly Airport is located in the south-east part of Paris (14 km from the center of Paris).

by TAXI: The easiest way to get into the center of the city is by taxi which costs around 25 euros from Orly Airport.

by ORLYBUS: http://www.ratp.fr/en/ratp/c_22226/orlybus/

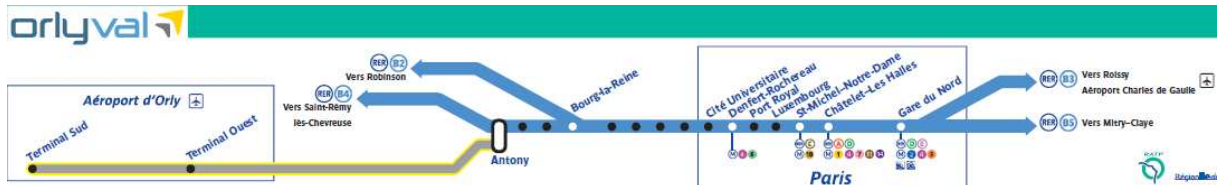
To get into the center of Paris, you can take a shuttle bus, called ORLY BUS. In this case, you will arrive to Denfert-Rochereau station (also on the RER B line 20 min). One way ticket on the Orly Bus costs 7 EUR. It takes around 40 min to get to Bagneux from Orly Airport by RER B.



by ORLYVAL: http://www.ratp.fr/en/ratp/c_22228/orlyval/

Orlyval is a driverless light rail transit line that connects Orly airports with Antony RER station (one way ticket: 10.90 EUR, approximate time from Orly to Antony station: 16min and to Bagneux station: 30 min).

Details: [Antony // Aéroport d'Orly](#)



If you wish to find some more information, prices of the tickets and the duration of the trips, you can go to the following website:

http://www.ratp.fr/fr/upload/docs/application/pdf/2011-07/paris_public_transport.pdf
and download the file “paris_public_transport.”

2) CHARLES DE GAULLE AIRPORT (CDG)

Roissy Charles de Gaulle Airport (first French airport) is situated in the north-east part of Paris (27 km to the center of Paris, 1h 10min) in Zone 4. To get to the center of Paris, you can take a taxi (which costs around 50 euros) or **RER B** from the CDG Airport. If you wish to check the exact prices of the tickets and the duration of the trip, we recommend you the website:

http://www.ratp.fr/fr/upload/docs/application/pdf/2011-07/paris_public_transport.pdf

where you can download the file “paris_public_transport.” If you decide to take **RER B**, you can ask whether it goes to the Bagneux station (where ENS Cachan is located). Please notice, that RER goes to different destinations and does not stop always at all the stations. You should take RER B in the direction to Robinson or Saint-Rémy, Iès-Chevreuse, it should stop at **Bagneux station**.

Details: Aéroport Charles de Gaulle- Mithy-Claye // Robinson - Antony - St-Rémy-lès-Chevreuse



3) BEAUVAIS AIRPORT

Beauvais Airport is located quite far away from Paris (around 90 km, 1h 15min to the center of Paris). The easiest way to travel from the Beauvais Airport to the central Paris is to take a shuttle bus which will take you to the Porte Maillot. The cost (one way ticket) is 15 EUR. You can find all the necessary information (time schedule, length of the trip, etc.) on the website of Beauvais Airport: <http://www.aeroportbeauvais.com/>
<http://www.aeroportbeauvais.com/bus.php?lang=fr> (information about the bus)

How to get to Paris (and ENS Cachan) from all the train stations

If you are taking a train (SNCF, TGV) to Paris, you can book your ticket to:

1) Gare St-Lazare (it takes around 38 min from Gare du Nord station to Bagnex station)¹

2) Gare du Nord (27 min)

3) Gare de l'Est (32 min)

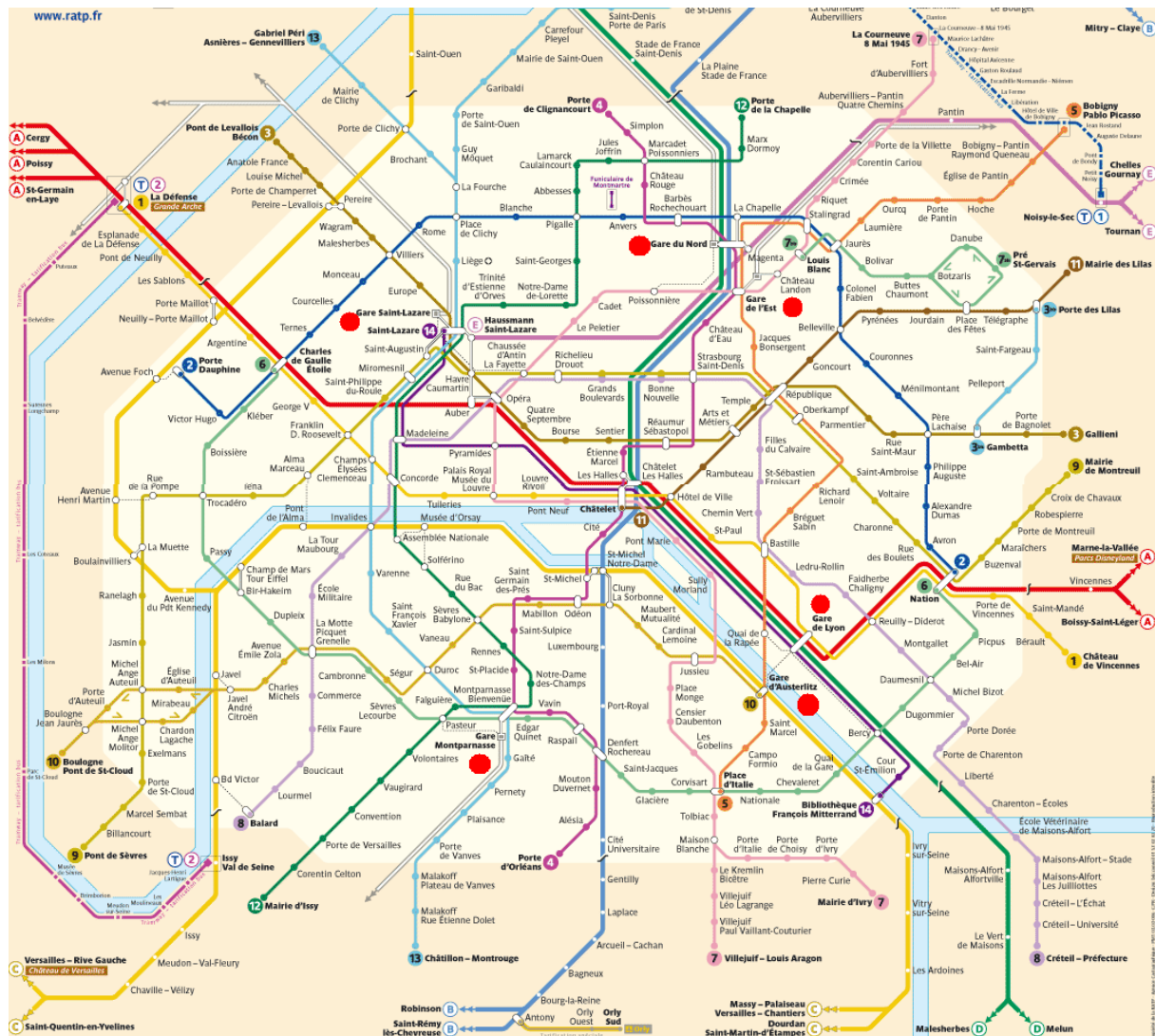
4) Gare de Lyon (33 min)

5) Gare d'Austerlitz (37 min)

6) Gare Montparnasse (22 min)

using for instance:

<http://www.voyages-sncf.com/> (also in English). We locate all the train stations on the Metro Map (red dots) so that you can see which line to take from the train station to the center of Paris or ENS Cachan.



You can arrive to one of six train stations depending upon where you are coming from. All of the stations are connected to the Paris Metro. Red color shows the train stations. By looking at the map, you can see how you can get into the center of Paris or ENS Cachan (ENS is located next to the Bagnex station of RER B).

¹ The approximate time given in the brackets depends upon the time of the day, actual traffic and other factors. You can always check the time needed to get from any station in Paris to another (use the names of the stations from the Metro Map) using the following website: <http://www.ratp.fr/>. You will obtain the approximate time, where to change the metro/RER/bus, the information whether you have to walk and the map of your trip.

If you are coming from Luxembourg, Switzerland, Austria, Hungary, southern Germany and eastern France you will use the Gare de l'Est. If you are coming from Spain, Portugal and Southwest France you will use the Gare d'Austerlitz. If you are taking a train from Switzerland, Italy and Greece as well as south and southeastern France you will use the Gare de Lyon. The Gare Montparnasse is for western France, Chartres and Brittany while Gare St Lazare is for northwest France, Normandy and le Havre. Gare du Nord is for Belgium, the Netherlands, Scandinavia, Poland, Russia, northern Germany and the UK. The Eurostar trains which go to and from London in 3 hours through the Chunnel also use this station.

Hotels in Paris

The information about the accommodation you can find on the website of SustainCity meeting:

<http://www.sustaincity.org/events/16-02-2012-consortium-meeting>

--> Details --> Accommodation.

We selected hotels (with an easy access to ENS Cachan where the meeting is held) in Paris and Cachan and we provide some additional information about each option. Participants are requested to reserve their rooms themselves.

Discovering Paris

Never been to Paris before? Or willing to get to know some more places, here you can find some useful information where to go and what to see:

http://www.ratp.fr/en/ratp/c_21890/discovering-paris/

<http://www.parisnotes.com>

<http://www.aparisguide.com>